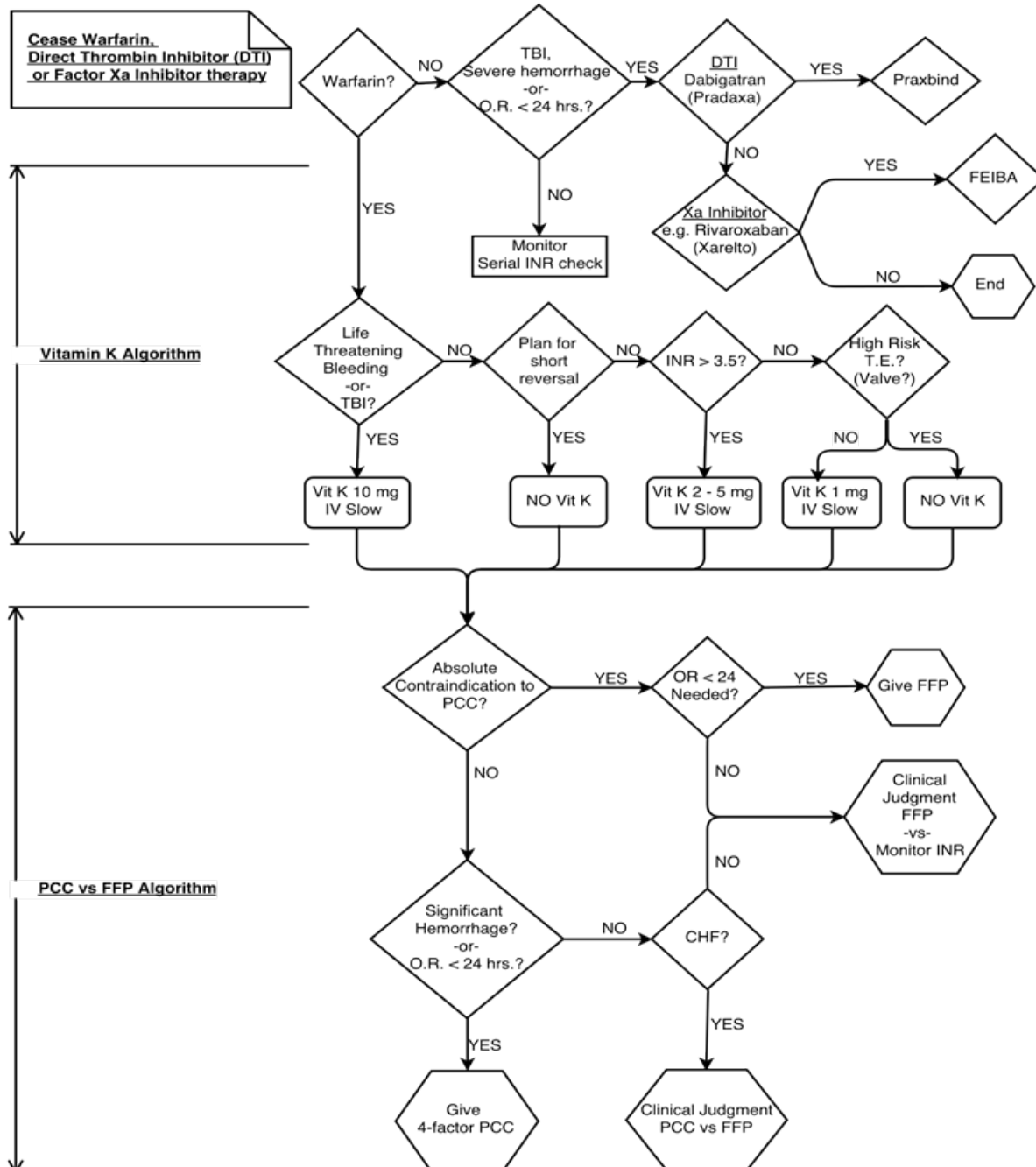




Guideline for Emergent/Urgent Reversal of therapeutic Anticoagulation

Updated: 6/26/2016

GUIDELINE FOR EMERGENT/URGENT REVERSAL OF THERAPEUTIC ANTICOAGULATION



PCC Absolute Contraindications:

1. Heparin Induced Thrombocytopenia
2. Disseminated Intravascular Coagulation
3. Known Allergies to Albumin, Factors II, VII, IX or X, Protein C or Protein S, Anti-thrombin III, or Heparin.

PCC Relative Contraindications:

1. Known T.E. disorders
2. Any of the following in last 3 months:
 - a. Unstable Angina
 - b. Myocardial Infarction
 - c. Ischemic Stroke
 - d. Severe Peripheral Vascular Disease
3. Pregnancy
4. Jehovah's Witness

Abbreviations:

Admin = Administration
 CHF= Congestive Heart Failure
 DTI= Direct Thrombin Inhibitor
 FFP= Fresh Frozen Plasma
 INR= International Normalized Ratio
 T.E.= Thromboembolic